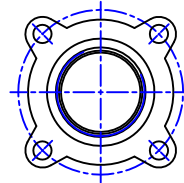
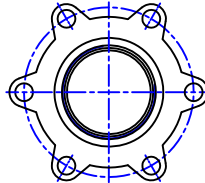


Fig No:

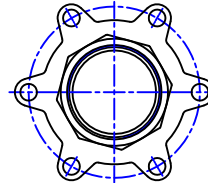
PB-3110H



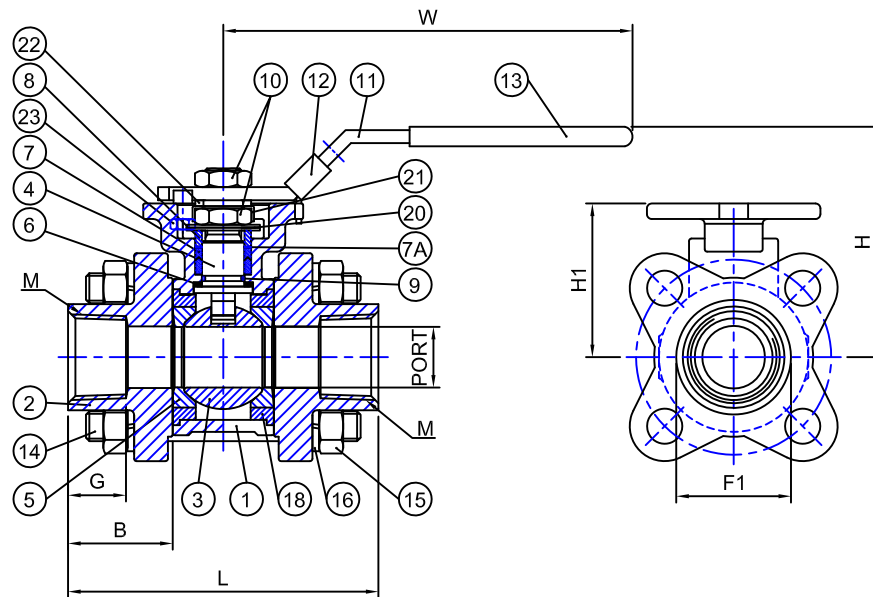
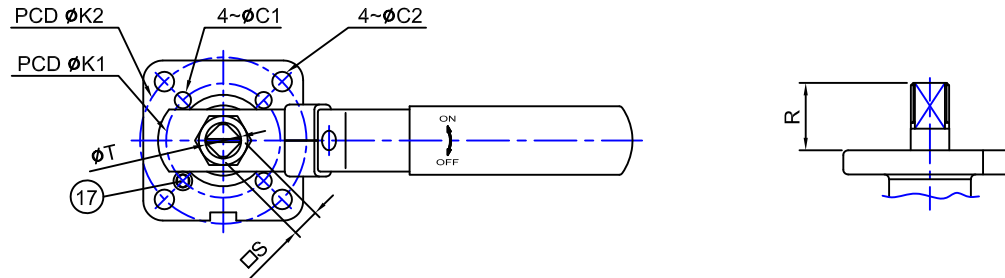
For 2-1/2"



For 3"



For 4"



DIMENSIONS

unit:mm

SIZE	PORT	F1	B	G	L	H1	H	W	K1	K2	C1	C2	S	T	R	M	CV	Torque (kgf-cm)	Weight (kgs)	ISO5211
2-1/2"	65	ø88	48.5	34	183	102.9	146.9	302	70	102	10	12	17	22	18	NPT	843	764.8	9.6	F07/F10
3"	80	ø104	54.5	41	209	114.4	158.4	302	70	102	10	12	17	22	18	NPT	1150	1121.6	15.04	F07/F10
4"	100	128.5	55	39	235	138.4	182.4	302	70	102	10	12	17	22	18	NPT	1932	2549.2	24.28	F07/F10

MATERIAL LIST

NO.	PART NAME	MATERIAL	Q'TY
		STAINLESS STEEL	
1	BODY	A351-CF8M	1
** 2	CAP	A351-CF3M	2
** 3	BALL	A351-CF8M	1
4	STEM	SS316	1
** 5	SEAT	RPTFE	2
6	THRUST WASHER	PTFE	1
7	STEM PACKING	PTFE	1SET
7A	PACKING PROTECTOR	50% PTFE + 50% 316	1
8	SLEEVE	SS304	1
9	O-RING	Viton	1
10	THIN NUT	SS304	2
11	HANDLE	SS304	1
12	LOCKING PAD	SS304	1
13	HANDLE COVER	PLASTIC	1
** 14	BOLT	B8M	4~6
** 15	NUT (2)	8M	8~12
** 16	SPRING WASHER (2)	SS316	8~12
17	SET SCREW	SS304	1
** 18	GASKET	PTFE	2
20	DISK SPRING WASHER	SS301	2
21	LOCK WASHER	SS304	1
22	QUADR WASHER	SS304	1
23	NUT(3)	SS304	1

** This part can be used on 1030

